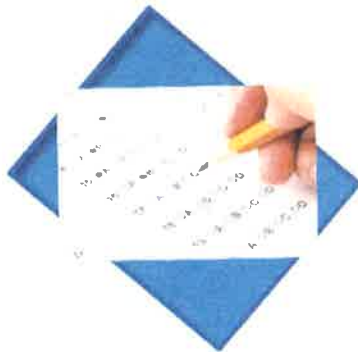




# Annual Report on Student Assessment Data

Rye City School District  
November 1, 2016



Dr. Brian Monahan  
Ms. Sheryl Goffman  
Ms. Kerri Winderman





A look at the numbers....

# **HOW DID OUR STUDENTS PERFORM IN GRADES 3-12?**

# AP Historical Data 2006-2016



Year	AP Candidates	Exams Taken	% of 3 or More
2006	298	640	87%
2007	296	647	86%
2008	348	726	84%
2009	398	806	85%
2010	438	839	87%
2011	453	916	85%
2012	458	991	87%
2013	467	920	86%
2014	509	1013	81%
2015	554	1083	80%
2016	581	1104	80%

# AP Results, July 2016



Subject	PERFORMANCE LEVEL					Total Exams	SCORE %		Average Score
	5	4	3	2	1		% of 3 or more	% of 4 or more	
Art 2D Design	13	14	7	5	0	39	87%	69%	3.9
Art History	3	8	7	3	2	23	78%	48%	3.3
Biology	5	11	7	2	0	25	92%	64%	3.8
Calculus AB	15	17	11	3	3	49	88%	65%	3.8
Calculus BC	23	4	2	1	0	30	97%	90%	4.6
Chemistry	4	8	18	5	0	35	86%	34%	3.3
Computer Science	3	9	9	2	4	27	78%	44%	3.2
Eng Lang/Comp	20	22	12	7	0	61	89%	69%	3.9
Eng Lit/Comp	19	34	23	6	1	83	92%	64%	3.8
Env. Science	3	15	11	3	2	34	85%	53%	3.4
European History	8	8	6	10	0	32	69%	50%	3.8
French Language	1	1	4	1	0	7	86%	29%	3.3

# AP Results, July 2016 (continued)



Subject	PERFORMANCE LEVEL					Total Exams	SCORE %		Average Score
	5	4	3	2	1		% of 3 or more	% of 4 or more	
German Lang. & Culture	1	0	0	0	0	1	100%	100%	5.0
Italian Lang. & Culture	1	0	0	0	0	1	100%	100%	5.0
Japanese Lang. & Culture	2	0	0	0	0	2	100%	100%	5.0
Latin	0	2	2	1	0	5	80%	40%	3.2
Macro Economics	14	20	13	17	8	72	65%	47%	3.2
Physics 1	4	7	9	6	4	30	67%	37%	3.0
Psychology	39	33	22	16	17	127	74%	57%	3.5
Spanish Language	12	15	11	3	0	41	93%	66%	3.9
Statistics	2	2	1	1	1	7	71%	57%	3.4
Studio Art Drawing	0	1	6	3	0	10	70%	10%	2.8
US Gov't & Politics	15	11	6	12	12	56	57%	46%	3.1
US History	31	45	42	25	22	165	72%	46%	3.2
World History	38	42	42	18	2	142	86%	56%	3.7
<b>TOTALS</b>	<b>276</b>	<b>329</b>	<b>271</b>	<b>150</b>	<b>78</b>	<b>1104</b>			

# SAT Critical Reading, Math, Writing Test Data: 2012-2016\*



Year	Critical Reading	Math	Writing
2012	592	612	616
2013	587	600	608
2014	580	610	600
2015	603	602	613
<b>2016*</b>	<b>592</b>	<b>614</b>	<b>618</b>
<b>State Mean 2016</b>	<b>489</b>	<b>508</b>	<b>477</b>

\* Old SAT –Results based on 2012 through January 2016 only.

# SAT Subject Test Data (SAT II): 2012-2016



Subject	2012	2013	2014	2015	2016	National Mean
Bio E	665	684	682	696	678	616
Bio M	739	704	683	751	711	647
Chemistry	721	717	678	710	739	668
Literature	657	640	659	673	650	599
Math Level I	646	650	647	651	650	599
Math Level II	703	704	682	696	701	690
US History	679	684	655	652	665	624
World History	691	669	666	658	628	615



# Regents Results 2016

Regents Exam	Number Tested	Below 55	55-64	65-78	79-84	85-100	%Passing
Chemistry	250	0%	10%	45%		44%	<b>89%</b>
Common Core Algebra*	45	2%	7%	53%	27%	11%	<b>91%</b>
Common Core ELA	261	0%	0%	7%	9%	84%	<b>100%</b>
Earth Science	167	2%	2%	10%		86%	<b>96%</b>
Global History	283	1%	2%	27%		70%	<b>97%</b>
Living Environment	222	0%	2%	21%		77%	<b>98%</b>
US History/Gov't	272	0%	2%	20%		78%	<b>98%</b>

\*Moving to 2-year pathway, so only high schools students who needed more time took CC Algebra in 2016.



# Changes in NY State Testing Program Grades 3-8



- Additional educator involvement
- Fewer questions
- Untimed

# ELA RESULTS: PROFICIENCY OVER TIME AND COHORT



ELA LONGITUDINAL DATA (% Proficient)				
	2013	2014	2015	2016
<b>Grade 3</b>	54%	57%	54%	74%
<b>Grade 4</b>	64%	47%	62%	67%
<b>Grade 5</b>	71%	61%	52%	56%
<b>Grade 6</b>	71%	63%	63%	62%
<b>Grade 7</b>	69%	66%	66%	62%
<b>Grade 8</b>	63%	71%	71%	68%



Students in grades 3-8 who met or exceeded the ELA proficiency standard:

- 38% in **New York State**
- 46% in **Westchester County**
- 65% in the **Rye City School District**

## ELA Proficiency Comparisons by District (Percent at Levels 3 & 4 combined)



School District	ELA 3	ELA 4	ELA 5	ELA 6	ELA 7	ELA 8	AVG ELA
Edgemont	83.6%	72.1%	77.7%	69.3%	62.8%	82.5%	74.38%
Scarsdale	86.8%	82.7%	69.8%	55.9%	66.4%	79.9%	73.29%
Bronxville	86.8%	79.3%	64.0%	65.4%	66.4%	73.6%	72.19%
Chappaqua	82.3%	75.7%	59.8%	64.4%	68.9%	80.3%	71.95%
Irvington	77.7%	65.8%	63.0%	68.8%	72.5%	75.7%	70.66%
Byram Hills	61.7%	67.6%	62.9%	86.8%	71.1%	66.7%	69.87%
Hastings-on-Hudson	72.0%	71.0%	64.6%	67.4%	80.2%	61.4%	69.53%
Katonah-Lewisboro	65.3%	65.6%	71.1%	63.8%	69.8%	72.9%	67.84%
Briarcliff Manor	72.0%	76.9%	69.1%	56.2%	43.2%	77.1%	65.64%
Pelham	73.7%	60.3%	64.8%	65.4%	63.7%	65.7%	65.56%
<b>RYE CITY</b>	<b>74.3%</b>	<b>67.2%</b>	<b>56.1%</b>	<b>62.2%</b>	<b>61.5%</b>	<b>68.3%</b>	<b>64.96%</b>
Rye Neck	70.3%	65.6%	55.4%	62.2%	53.3%	74.5%	63.56%
Croton-Harmon	70.5%	64.0%	47.9%	55.8%	57.0%	64.3%	60.11%
Pleasantville	73.2%	69.4%	45.7%	45.6%	56.3%	59.0%	58.39%
Blind Brook	70.2%	65.1%	44.4%	52.0%	57.0%	56.4%	57.68%



## MATH RESULTS: PROFICIENCY OVER TIME AND COHORT

<b>MATH LONGITUDINAL DATA (% Proficient)</b>				
	<b>2013</b>	<b>2014</b>	<b>2015</b>	<b>2016</b>
Grade 3	61%	66%	59%	65%
Grade 4	73%	59%	79%	66%
Grade 5	76%	74%	67%	74%
Grade 6	80%	76%	74%	70%
Grade 7	77%	68%	79%	81%
Grade 8	59%	73%	67%	61%



Students in grades 3-8 who met or exceeded the math proficiency standard:

- 39% in **New York State**
- 48% in **Westchester County**
- 69% in **the Rye City School District**

## Math Proficiency Comparisons by District (Percent at Levels 3 & 4 combined)



School District	MATH 3	MATH 4	MATH 5	MATH 6	MATH 7	MATH 8	AVG MATH
Chappaqua	73.9%	74.6%	71.1%	89.2%	83.0%	88.1%	80.25%
Scarsdale	83.5%	84.2%	79.1%	76.0%	78.3%	81.0%	80.17%
Edgemont	79.6%	80.4%	82.5%	84.1%	68.8%	84.5%	79.70%
Bronxville	87.0%	85.1%	81.9%	69.1%	83.9%	61.9%	78.25%
Briarcliff Manor	80.0%	89.6%	78.0%	73.8%	69.1%	64.3%	76.72%
Byram Hills	63.4%	77.7%	70.2%	87.8%	83.3%	43.1%	74.30%
Irvington	80.8%	68.9%	71.0%	81.6%	72.1%	55.1%	73.70%
Hastings-on-Hudson	77.7%	80.8%	80.9%	61.1%	69.9%	61.2%	73.16%
Blind Brook	80.8%	78.8%	60.6%	63.2%	70.6%	73.3%	71.24%
Katonah-Lewisboro	72.6%	68.8%	75.4%	71.1%	67.0%	71.1%	70.99%
Pelham	69.8%	74.1%	77.3%	78.7%	71.1%	23.3%	70.81%
Rye Neck	58.8%	73.5%	77.2%	75.0%	67.8%	60.6%	69.57%
<b>RYE CITY</b>	<b>64.7%</b>	<b>66.4%</b>	<b>73.5%</b>	<b>69.7%</b>	<b>81.3%</b>	<b>61.0%</b>	<b>69.41%</b>
Pleasantville	72.3%	63.6%	58.1%	69.6%	73.4%	56.7%	65.81%
Croton-Harmon	69.4%	76.8%	60.9%	65.1%	40.7%	49.3%	61.91%

# Science Grades 4 and 8



<b>PERCENT PROFICIENT (LEVELS 3 AND 4 COMBINED)</b>				
	<b>2013</b>	<b>2014</b>	<b>2015</b>	<b>2016</b>
Grade 4	99%	95%	97%	98%
Grade 8	98%	89%	83%	97%



## Enhancing our practice. . .



Increasing opportunities for student success

- Data Analysis
- Program and Curriculum Review
- Professional Development
- Academic Intervention Services



Thank you for  
your attention.