

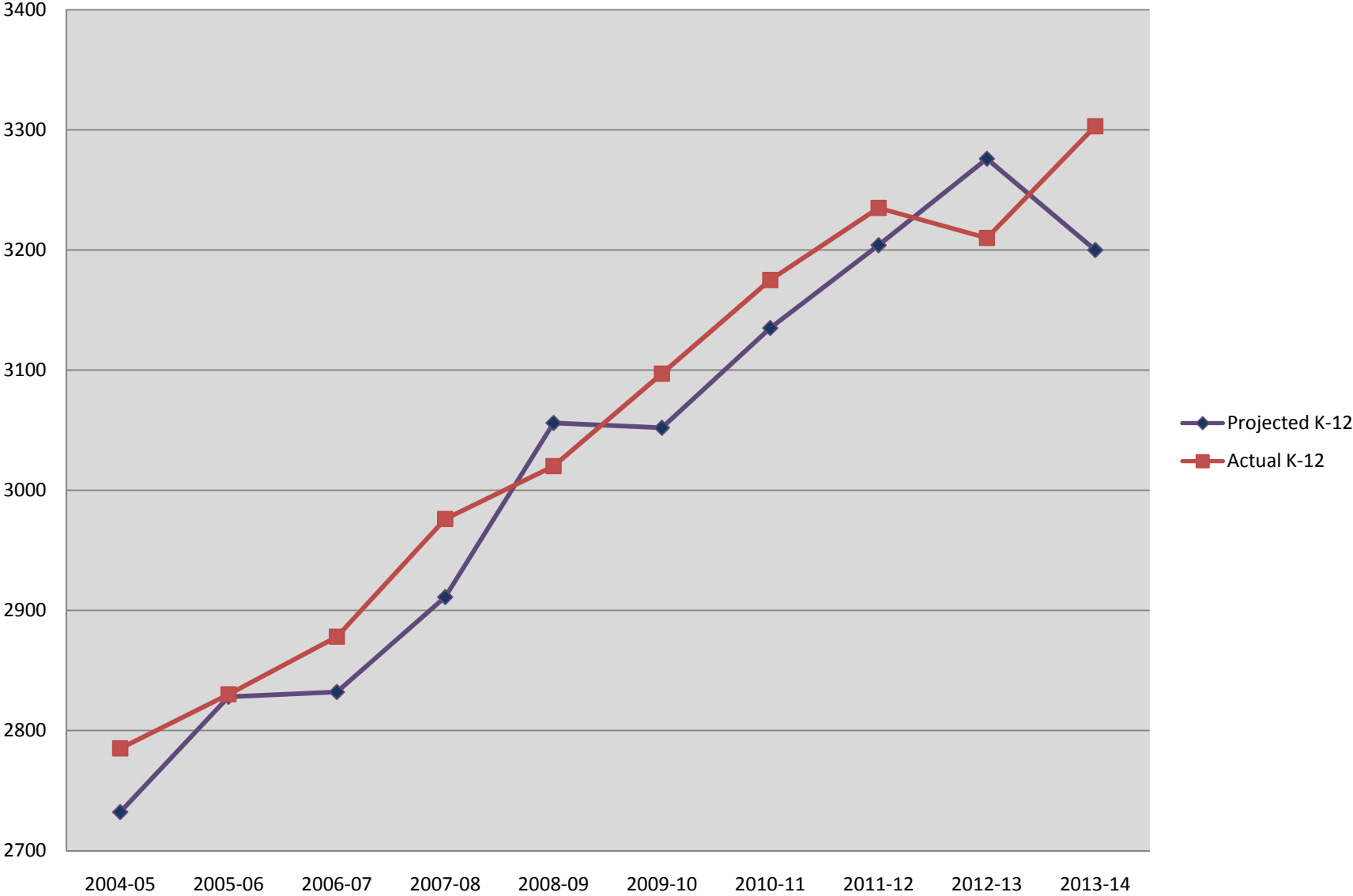
# 2013/14 Current Student Enrollment

October 8, 2013

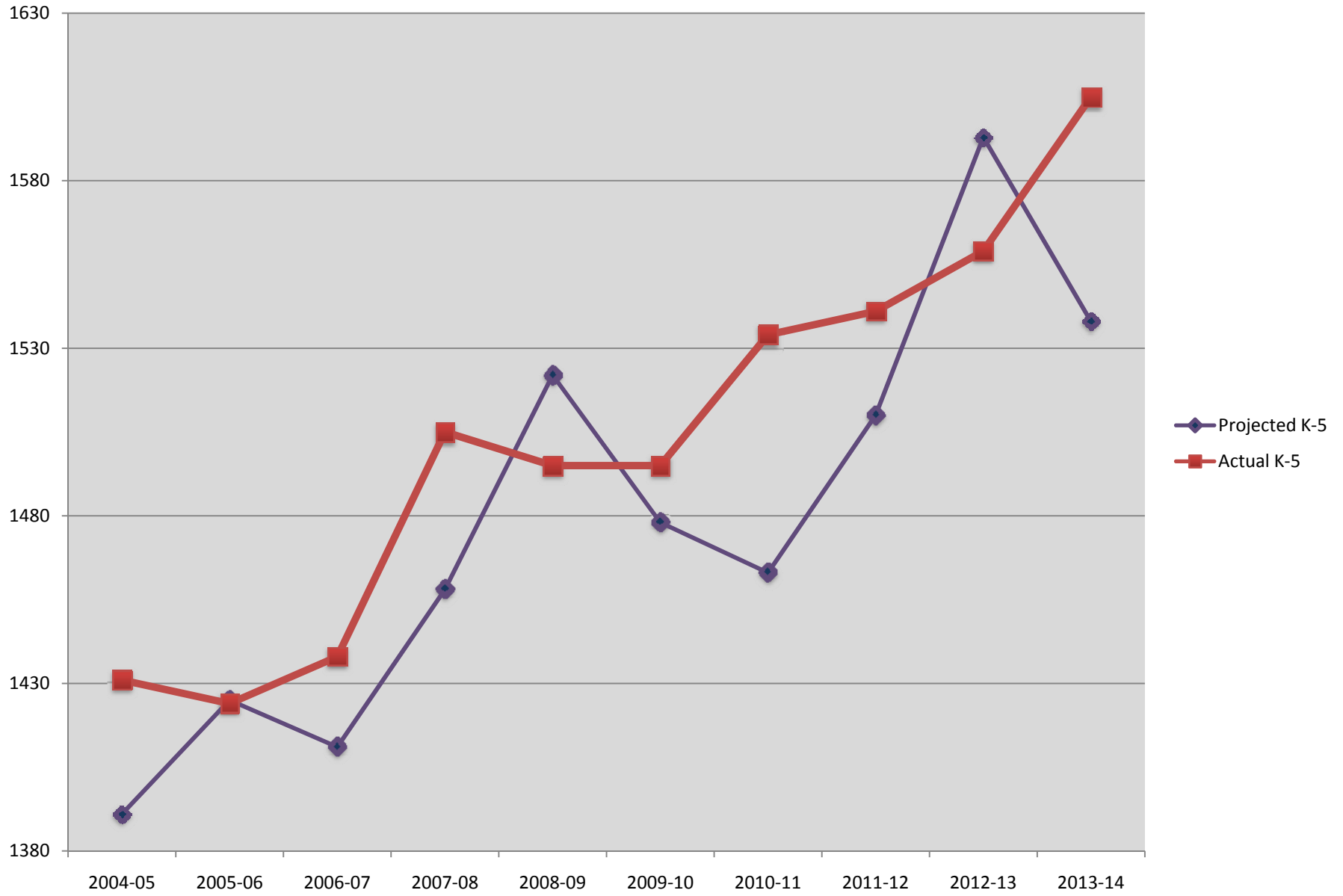
# 2013-14 ENROLLMENT DATA

	Actual BEDS		Projected		Actual	2013-2012 Actual
	<u>2012</u>		<u>2013</u>		<u>2013</u>	<u>Difference</u>
Midland	553		542		583	+30
Milton	404		385		404	-
Osborn	612		627		618	+6
Middle School	754		720		739	-15
High School	<u>887</u>		<u>933</u>		<u>959</u>	+ 72
Total	3,210		3,200		3,303	+93

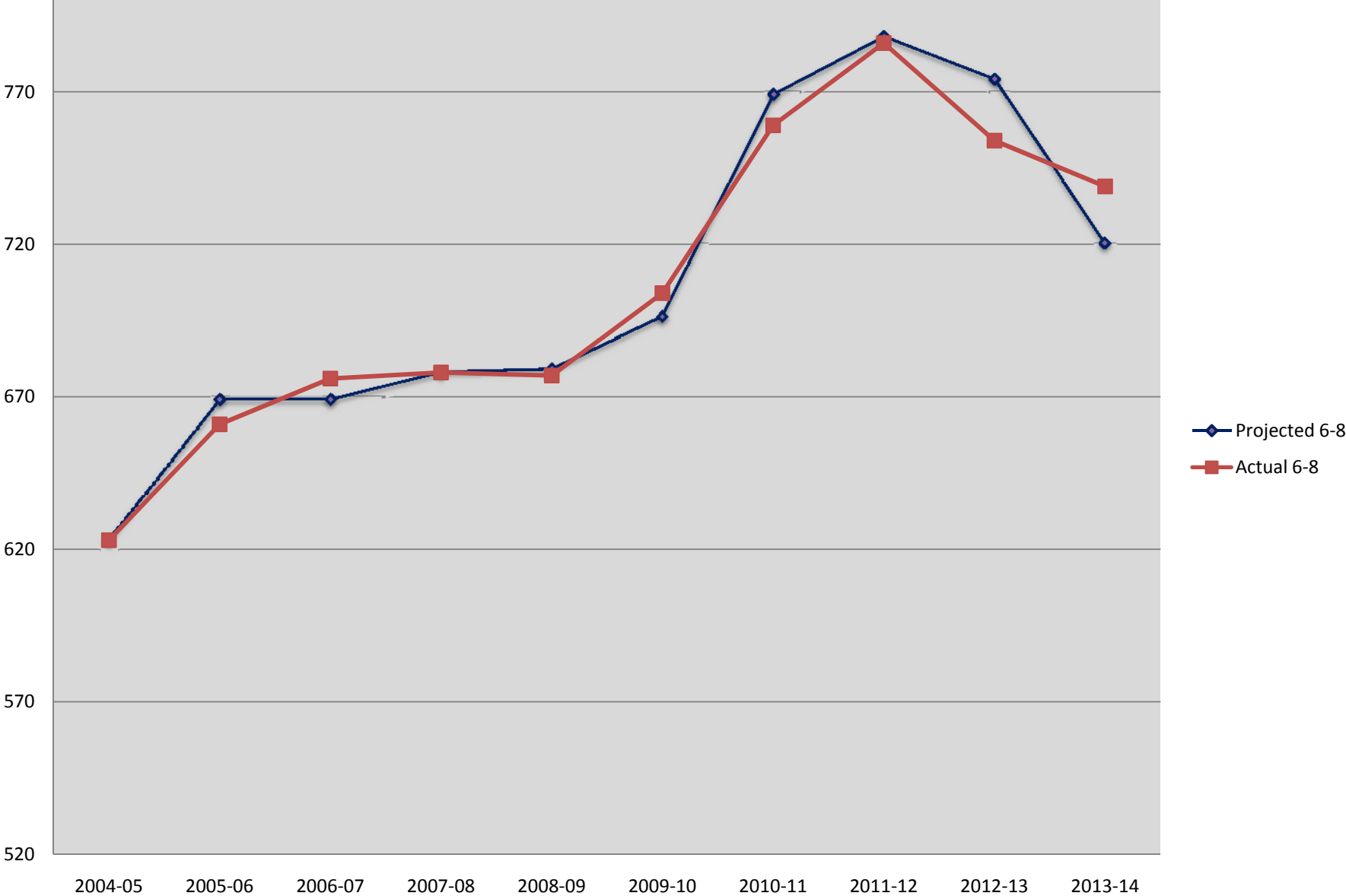
# Projected and Actual Enrollment Total for Grades K-12



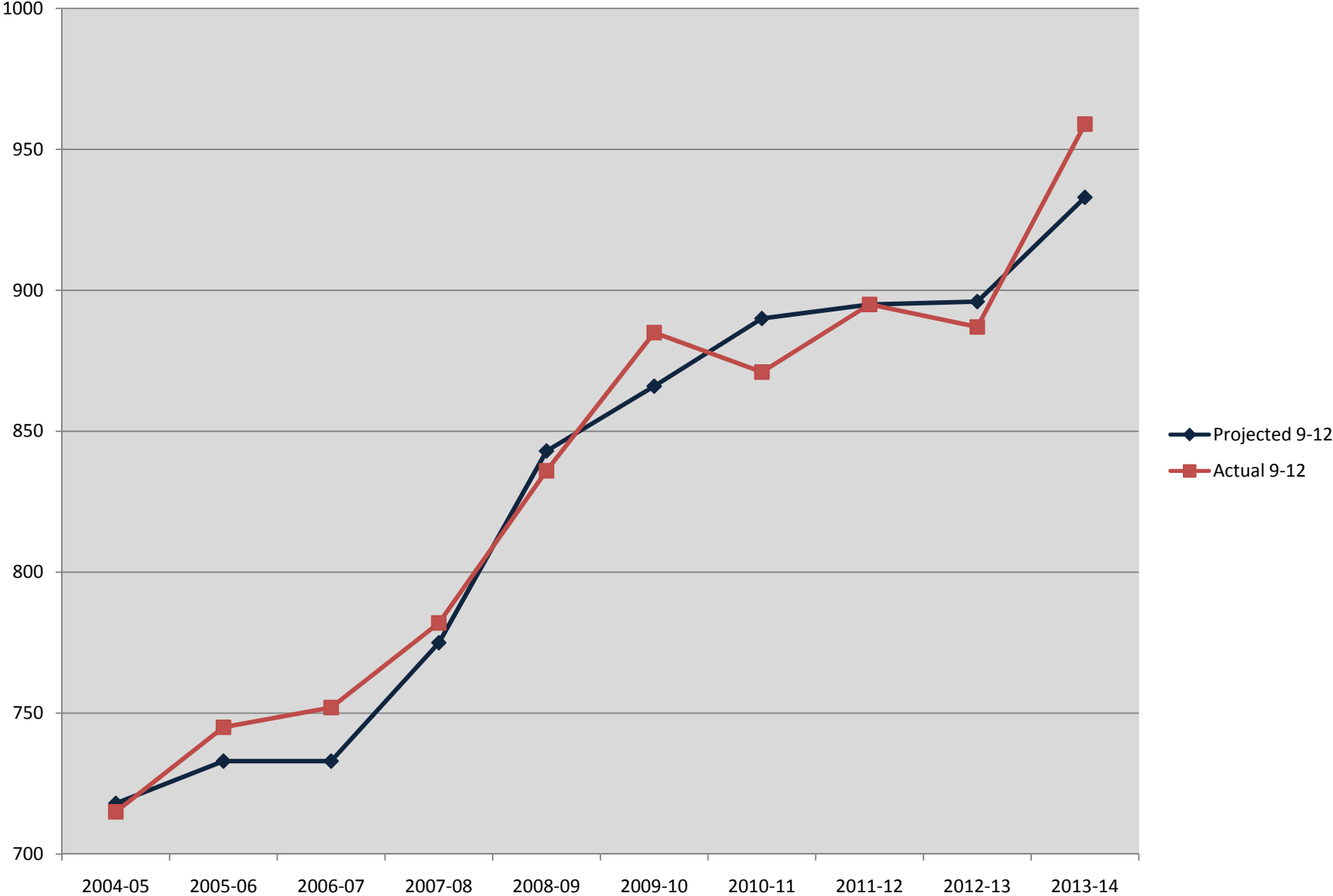
## Projected and Actual Enrollment Grades K-5



# Projected and Actual Enrollment Middle School Grades 6-8



# Projected and Actual Enrollment for High School Grades 9-12



# OVERALL GROWTH IMPACT

- Increase of 93 students (2.9%)
- Increase in student enrollment at elementary and high school levels
- Planned reductions of class sections based on projections were not possible due to actual enrollments
- Increase of classroom teachers (4)
- Increase in related-arts time  
(i.e., art, music, physical education)
- Increase of instructional expenses  
(i.e., supplies and materials)